



3 Copperwood Court, 51 Sydney Road, Haywards Heath, West Sussex, RH16 1QD

£1,450 Per Calendar Month

A prestigious apartment in a prime location for Haywards Heath station. This 2 bedroom first floor luxury apartment comes with allocated parking. This unfurnished property is from the end of January 2026.

The Flat...

The open plan living room/kitchen boasts a sleek designer kitchen with high gloss units, granite worksurfaces & integrated ' appliances (electric oven & induction hob, fridge, freezer, dishwasher & washing machine). The bathroom & en-suite are fully tiled. Both bedrooms have fitted wardrobes.

Additional benefits include, neutral decor and secure entry system.

Outside comprises a communal bike shed and one allocated parking.

Sydney Road is situated within close proximity of Haywards Heath mainline station with its fast and regular services to London (London Bridge/Victoria in approx 47 mins), Gatwick International Airport and Brighton. Waitrose & Sainsbury's Superstores are also within walking distance.

Haywards Heath town centre is just under one mile distant and provides extensive range of shops. The Broadway offers an excellent selection of cafés, restaurants, bars and pubs whilst the towns leisure facilities include the Dolphin Leisure Centre. Surrounding towns and cities can be accessed via the A272 or A23(M) with the latter lying approximately five miles west of the town at Warminglid.

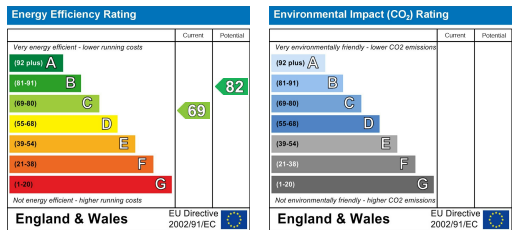
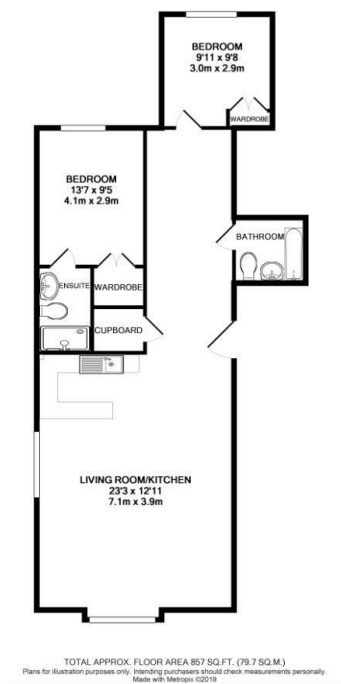
Council Tax Band: C

Permitted Fees:

Holding deposit - one weeks rent

Deposit - five weeks rent

The holding deposit will be refunded against the first month's rent but can be retained if the applicant withdraws from the property, fails the reference checks due to false or misleading information or fails the Right to Rent checks.



VIEWING BY APPOINTMENT WITH PSP HOMES
54 Church Road, Burgess Hill, West Sussex, RH15 9AE. TELEPHONE 01444 250999
OPEN SEVEN DAYS A WEEK www.psphomes.co.uk

Much care is taken in the preparation of our particulars, but we cannot guarantee the information given is accurate.
Property details are issued a general guide only and may not form any part of an offer or contract. We recommend intending purchasers check details personally.